

BioMeridian's MSAS®-Professional and MSA-21

The Meridian Stress Assessment Systems provide extraordinary new perspective on the state of the body's energetic health.

With BioMeridian's MSAS-Professional and MSA-21 Systems for Meridian Stress Assessment (MSA), a practitioner may choose to use the information gathered to determine the next step in a patient's health care.

- Non-invasive sensitivity screening. No scratch testing or injections are necessary.
- Nutritional evaluations can help patients who are looking for nutritional balance.
- Consider possible complementary approaches that may help a patient achieve a more balanced energetic state.
- Identify specific dental stressors that might contribute to health problems.
- Test for toxicity and drainage levels, and their effects on energy and organ functions.
- Help patients maintain the structural or functional integrity of important body systems.
- Suggest whether there is a condition present that may require traditional medical treatment.

If you have specific questions about the MSA-21 or MSAS-Professional System, or would like to schedule an appointment for testing, please contact BioMeridian or the clinic from which you received this brochure.

©2001, MSAS®-Professional is a registered trademark of BioMeridian International. All specifications subject to change without notice. Contact a BioMeridian representative for current information.

990616/4



"There is no question that the 21st century has arrived and any practitioners who utilize this technology will find themselves in demand and practicing medicine very successfully."

—Bruce H. Shelton, MD, MD(H), DHom

"Over the past several years, I have used this technology to help hundreds of patients solve their health problems. It's an excellent tool that has helped eliminate the guesswork."

—Bryon Rosquist, DC

"Testing patients for allergies and chemical exposure used to be a time-consuming and often difficult task. This technology has enabled us to do this and far more."

—Pauline Rose, RN, MN, SWNA

"I think this is an invaluable tool. It gives us clues to what is going on that regular blood tests or a history doesn't. It is extremely sensitive."

—John Limehouse, DVM

**Discover how the advanced technology of
BioMeridian's Meridian Stress Assessment System
can benefit you!**

MAKE AN APPOINTMENT

Carol Loechinger, D.C., N.M.D.
Richard Loechinger, D.C., N.M.D.
180-A East Spring Valley Road
Dayton, OH 45458
Ph: 937 434-8700 FAX: 937 434-2957

BioMeridian toll-free in the United States: (888) 224-2937

801-889-2224

Bring Your Life *Back To A* Healthy Balance

**Ask Your Practitioner About
Meridian Stress Assessment**

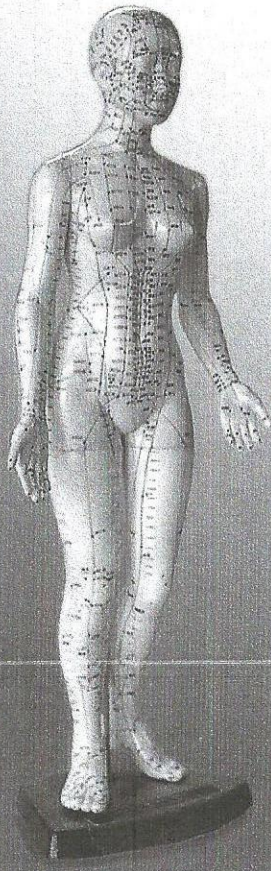


Enjoy the Health and Vitality of a Body in Balance

Ask your health practitioner about the
Meridian Stress Assessment System

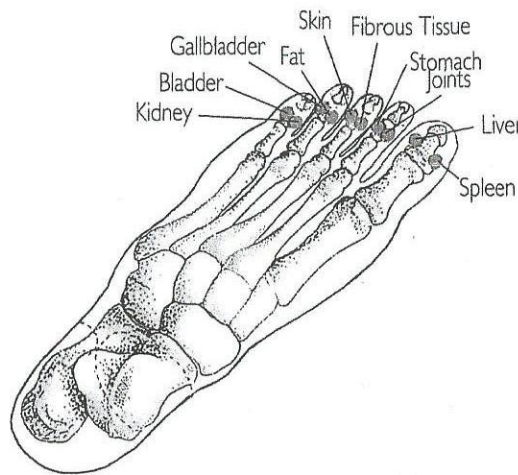
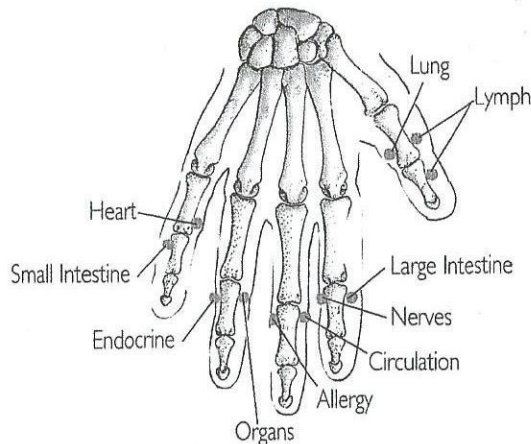
TO BETTER UNDERSTAND AND ENHANCE YOUR HEALTH

Meridian Stress Assessment™



Meridian Stress Assessment (MSA) is used to conduct a comprehensive evaluation of a person's energetic health and balance. This process involves measuring electrical conductivity at responsive points (meridian points) on the skin — typically on the hands and feet. The locations of the test points generally correspond to those of acupuncture points. These measurements are recorded to help provide a profile of a patient's present condition.

According to European medical research, acupuncture points are related to the body's organs and organ systems. Major groups of points are connected through channels, or meridians. Twenty of these meridians begin or end on the hands and feet.



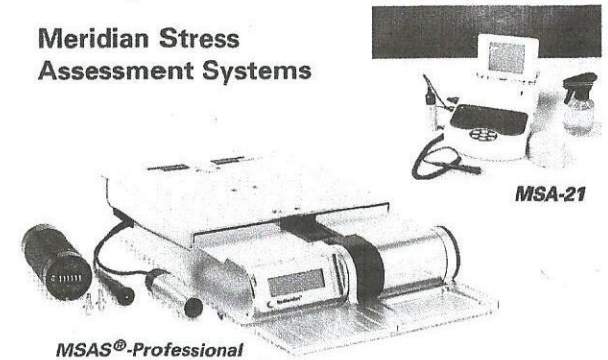
As a patient moves toward or away from health, the condition of any particular organ or system can be sensed along the meridians at representative points like those shown above. As a result, stress associated with the corresponding organs can be surveyed using the indicated points.

After the initial measurements have been taken and recorded, the results can be reviewed. If stress values are above or below equilibrium, the System's extensive computer database will allow consideration of a wide range of possibilities that might help the patient regain a healthy balance. The MSAS® allows consideration of thousands of herbal, homeopathic, and nutritional products.

Overall, an MSAS provides a completely non-invasive method for gaining valuable information about the body's vital functions. The primary objective of this procedure is to disclose patterns of stress and to provide feedback for use in a program to help restore each system and meridian to an appropriate balance.

Neither the MSA-21 nor the MSAS®-Professional meridian stress assessment system provide a medical diagnosis. If patients suspect that they need medical intervention, they should consult their physicians who can provide medical diagnosis and prescribe appropriate treatment regimens.

Meridian Stress Assessment Systems



YOUR PRACTITIONER MAY USE EITHER THE MSA-21 OR THE MSAS-PROFESSIONAL.

EACH DEVICE IS AN EXCELLENT SOURCE OF INFORMATION ABOUT YOUR ENERGETIC HEALTH - HELPING YOUR PRACTITIONER TO HELP YOU.